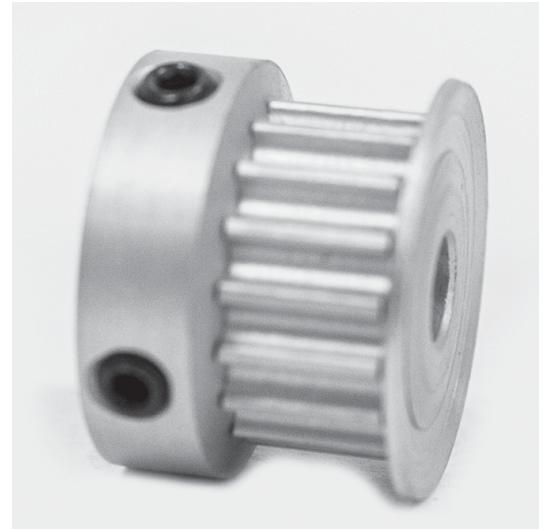


# POWERHOUSE™ TIMING PULLEYS

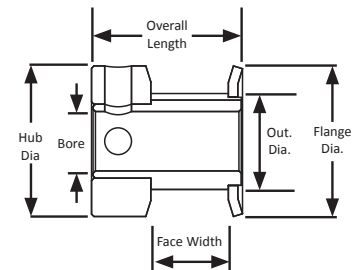
(For use with GT®2, GT®3, and FHT®-3 belts)

**3 mm Pitch  
For 6 mm Wide Belts  
Hub and Flanges  
Aluminum  
Clear Anodized  
Finished Bore**

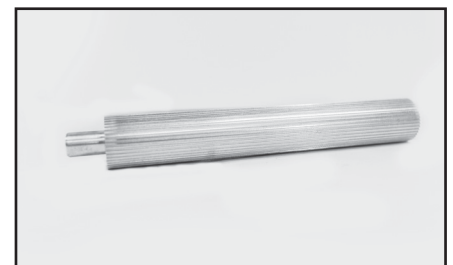
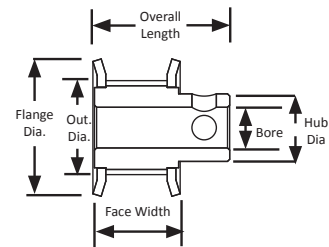


Part Number	No. of Teeth	Type	Pitch Dia. (in)	Out. Dia. (in)	Flange Dia. (in)	Bore (in)	Face Width (in)	Overall Length (in)	Hub Dia. (in)	Set Screw
16-3P06-6CA2	16	6C	0.602	0.572	0.710	0.188	0.334	0.572	0.710	2 x 6-40 @ 90°
16-3P06-6CA3	16	6C	0.602	0.572	0.710	0.250	0.334	0.572	0.710	2 x 6-40 @ 90°
17-3P06-6CA2	17	6C	0.639	0.609	0.740	0.188	0.334	0.572	0.740	2 x 6-40 @ 90°
18-3P06-6FA2	18	6F	0.677	0.647	0.790	0.188	0.386	0.691	0.442	2 x 4-40 @ 90°
18-3P06-6FA3	18	6F	0.677	0.647	0.790	0.250	0.386	0.691	0.442	2 x 8-32 @ 90°
19-3P06-6FA2	19	6F	0.714	0.684	0.815	0.188	0.386	0.691	0.468	2 x 4-40 @ 90°
19-3P06-6FA3	19	6F	0.714	0.684	0.815	0.250	0.386	0.691	0.468	2 x 8-32 @ 90°
20-3P06-6FA2	20	6F	0.752	0.722	0.895	0.188	0.386	0.691	0.500	2 x 4-40 @ 90°
20-3P06-6FA3	20	6F	0.752	0.722	0.895	0.250	0.386	0.691	0.500	2 x 8-32 @ 90°
21-3P06-6FA2	21	6F	0.790	0.760	0.895	0.188	0.386	0.691	0.500	2 x 4-40 @ 90°
21-3P06-6FA3	21	6F	0.790	0.760	0.895	0.250	0.386	0.691	0.500	2 x 8-32 @ 90°
22-3P06-6FA2	22	6F	0.827	0.797	0.945	0.188	0.386	0.691	0.562	2 x 4-40 @ 90°
22-3P06-6FA3	22	6F	0.827	0.797	0.945	0.250	0.386	0.691	0.562	2 x 8-32 @ 90°
24-3P06-6FA3	24	6F	0.902	0.872	1.025	0.250	0.386	0.691	0.625	2 x 8-32 @ 90°
25-3P06-6FA3	25	6F	0.940	0.910	1.060	0.250	0.386	0.691	0.625	2 x 8-32 @ 90°
26-3P06-6FA3	26	6F	0.977	0.947	1.105	0.250	0.386	0.691	0.625	2 x 8-32 @ 90°
28-3P06-6FA3	28	6F	1.053	1.023	1.173	0.250	0.386	0.691	0.701	2 x 8-32 @ 90°
30-3P06-6FA3	30	6F	1.128	1.098	1.250	0.250	0.386	0.691	0.776	2 x 8-32 @ 90°
32-3P06-6FA3	32	6F	1.203	1.173	1.323	0.250	0.386	0.691	0.851	2 x 8-32 @ 90°
34-3P06-6FA3	34	6F	1.278	1.248	1.398	0.250	0.407	0.713	0.921	2 x 8-32 @ 90°
36-3P06-6FA3	36	6F	1.353	1.323	1.473	0.250	0.407	0.713	1.000	2 x 8-32 @ 90°
38-3P06-6FA3	38	6F	1.429	1.399	1.549	0.250	0.407	0.713	1.075	2 x 8-32 @ 90°
40-3P06-6FA3	40	6F	1.504	1.474	1.625	0.250	0.407	0.713	1.150	2 x 8-32 @ 90°
44-3P06-6FA3	44	6F	1.654	1.624	1.775	0.250	0.407	0.713	1.300	2 x 8-32 @ 90°
45-3P06-6FA3	45	6F	1.692	1.662	1.775	0.250	0.407	0.713	1.300	2 x 8-32 @ 90°

### TYPE 6C



### TYPE 6F



For 3 mm POWERHOUSE™ pitch pulley stock and flanges, see page 312.